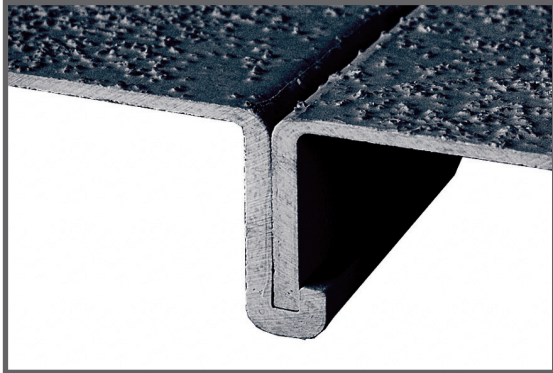
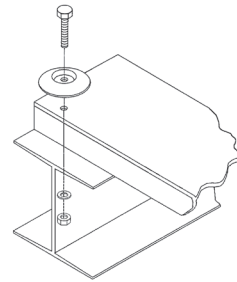
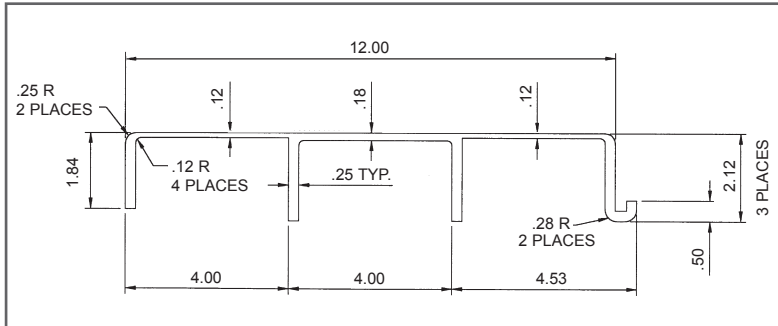


Dynadeck® Interlocking Flooring



Used in a wide range of industrial and commercial applications, Dynadeck® interlocking pultruded flooring panels provide a unique combination of durability, easy install, and low maintenance. Dynadeck is designed to be easily installed with sections snapping together more than three times faster than conventional flooring and can be disassembled for transporting. Dynadeck is available with a smooth solid top and is ADA compliant. It can also be gritted to provide a slip resistant surface.

Standard Smooth Solid Details



Type W Hold-Down Clips are recommended to secure Dynadeck panels to structural supports in order to eliminate potential damage to the panel.

Load / Deflection Information

SPAN	U/C	100 lb	200 lb	300 lb	500 lb	1000 lb	2000 lb
2 ft	ΔU	.010	.018	.029	.049	.097	.194
	ΔC	.008	.015	.024	.039	.079	.158
3 ft	ΔU	.035	.070	.105	.175	.350	—
	ΔC	.019	.038	.057	.095	.190	.380
4 ft	ΔU	.111	.222	.333	.555	1.110	—
	ΔC	.045	.090	.135	.225	.450	.900
5 ft	ΔU	.270	.540	.810	1.350	—	—
	ΔC	.068	.175	.263	.438	.876	—
6 ft	ΔU	.562	1.124	1.686	—	—	—
	ΔC	.151	.302	.453	.755	1.510	—

U – Uniform Load (lbs./ft.) C– Concentrated Load (lbs./ft at center of span)
 ΔU – Uniform Load Deflection (in.) ΔC– Concentrated Load Deflection (in.)

Applications

- Cooling Tower Fan Decks
- Cooling Tower Access Walkways
- Roofing Walkways
- Odor Containment Trench Covers
- Offshore Platform Protective Walls

Dynadeck® Resins

- ISOFR - Dark Gray (Standard), Flame Spread of 25 or Less
- VEFR - Beige, Flame Spread of 25 or Less

Dynadeck® Surfaces

- Smooth Solid
- Optional Gritted Solid